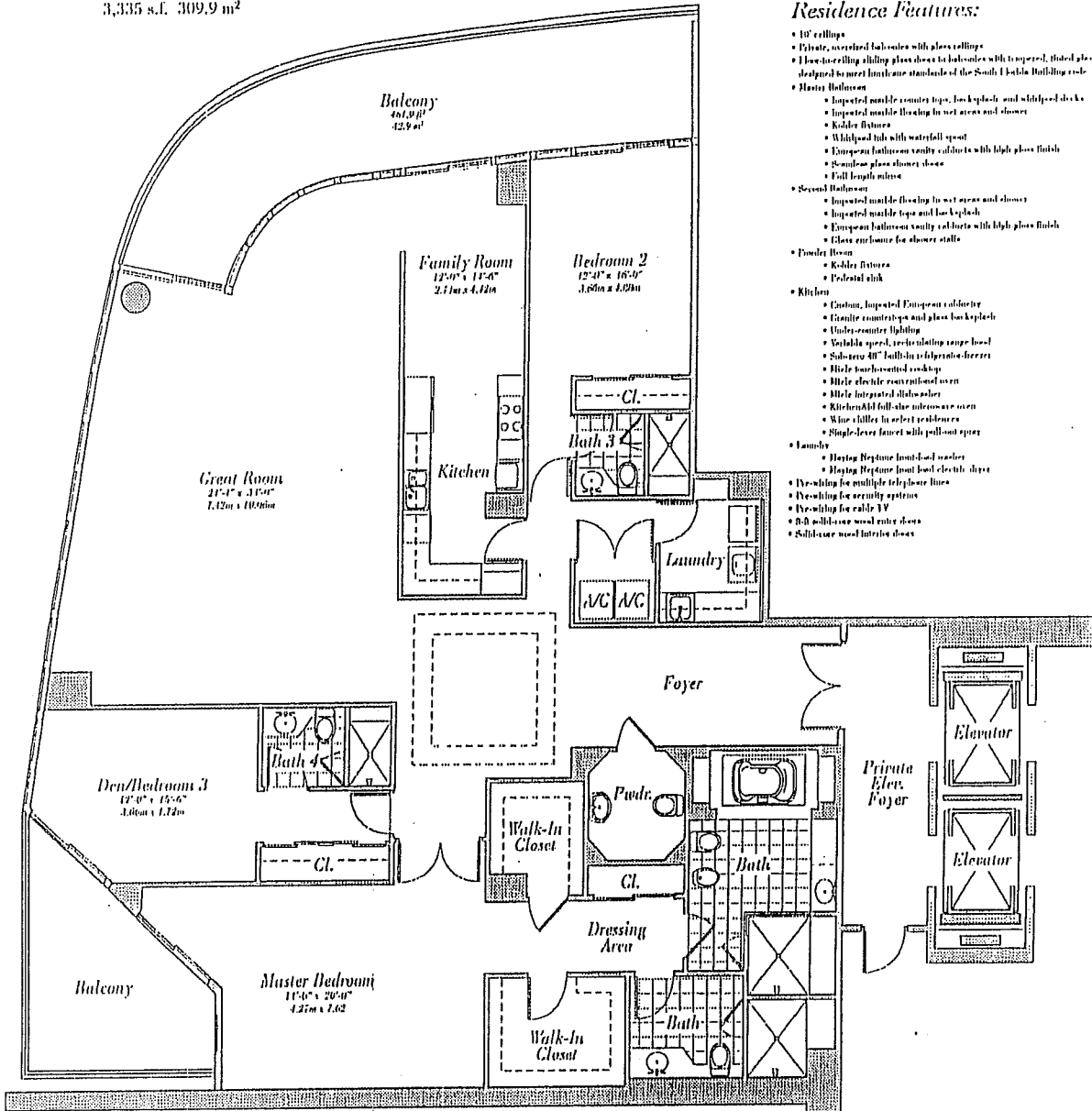


Residence 13a

Floors 36-39

3 Bedroom, 4 Bath, Powder Room
3,335 s.f. 309.9 m²



Residence Features:

- 10' ceilings
- Private, enclosed balconies with glass railings
- Low-to ceiling sliding glass doors to balconies with tempered, tinted glass designed to meet hurricane standards of the South Florida Building Code
- **Master Bathroom**
 - Imported marble counter top, back splash and whirlpool tub
 - Imported marble flooring in wet areas and shower
 - Kallia fixtures
 - Whirlpool tub with waterfall spout
 - European fixtures on vanity cabinets with high gloss finish
 - Seamless glass shower door
 - Full length mirror
- **Second Bathroom**
 - Imported marble flooring in wet areas and shower
 - Imported marble top and back splash
 - European fixtures on vanity cabinets with high gloss finish
 - Glass enclosure for shower stalls
- **Powder Room**
 - Kallia fixtures
 - Pedestal sink
- **Kitchen**
 - Custom, imported European cabinetry
 - Granite countertop and glass back splash
 - Under-counter lighting
 - Variable speed, recirculating range hood
 - Sub-zero 40" built-in refrigerator-freezer
 - Marble back-splashed cooking
 - Marble electric range/hood oven
 - Marble imported dishwasher
 - KitchenAid full-size microwave oven
 - Wine chiller for select appliances
 - Single-lever faucet with pull-out spray
- **Laundry**
 - Maytag Neptune front-load washer
 - Maytag Neptune front-load electric dryer
- Pre-wiring for multiple telephone lines
- Pre-wiring for security systems
- Pre-wiring for cable TV
- 200-watt-hour wood-rated doors
- Schedule steel interior doors

CONTINUUM
ON SOUTH BEACH

